



AI-Augmented Learning: Fostering Critical Thinking

This presentation explores strategies for integrating artificial intelligence (AI) into education while ensuring students develop critical thinking skills, rather than simply relying on AI for answers.

PS by Priti Solanki

Shifting from “What” to “Why” and “How”

Inquiry-Based Learning

Instead of asking "What is the capital of France?", ask "How has Paris' role as a capital influenced European history?"

Deeper Understanding

Encourage students to explain their reasoning and explore the "why" behind AI-generated responses.



Documenting AI Use and Justification

1 Policy for AI Use

Require students to document their reasoning for accepting or rejecting AI-generated content.

2 Explain Your Answer

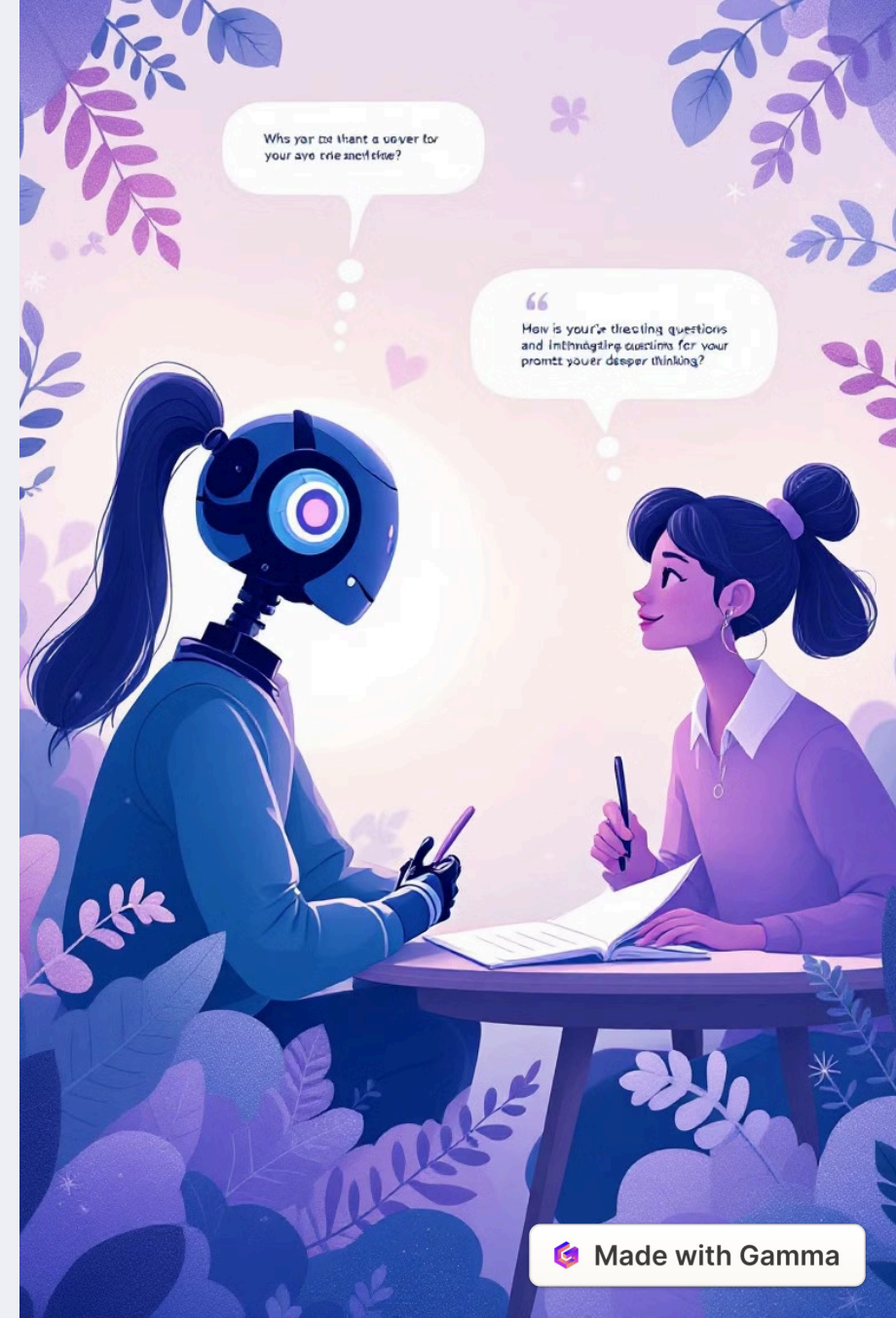
Use formats like "Why did you use this AI response?", "What reasoning supports or refutes this output?", and "How does this align with course concepts?".

AI as a Socratic Questioning Partner



Open-Ended Questions

Design AI-powered dialogues using prompts like "If this claim were false, what would be the counter-evidence?" and "What are the assumptions behind this statement?".



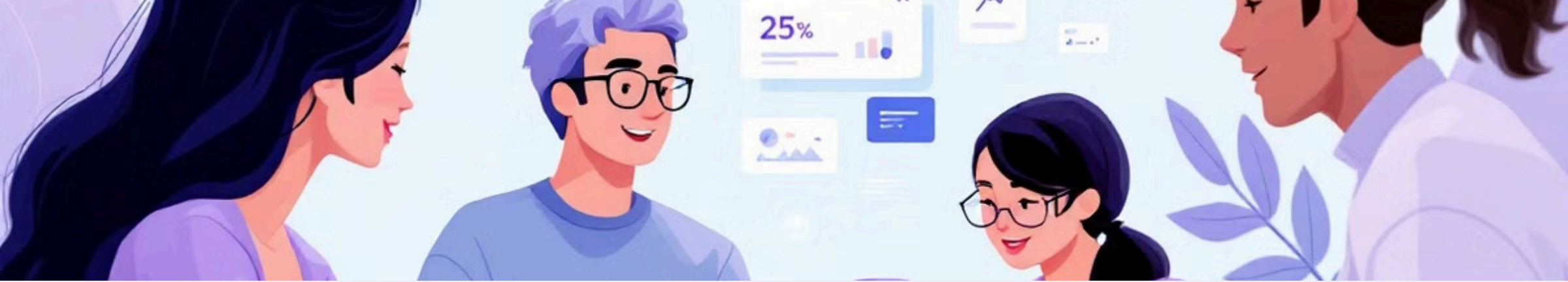
Reverse AI Approach: Correcting Mistakes

AI Hallucinations

Provide AI-generated content with logical flaws or historical inaccuracies.

Discernment and Analysis

Ask students to identify errors, provide corrections, and explain why the AI's logic was flawed.



Project-Based Learning & Real-World Problems

Independent Research

Move beyond AI-generated responses by assigning projects that require independent research.

1

2

Real-World Applications

Encourage students to use AI to collect data, design solutions, and justify their choices.



Comparing AI Reasoning with Human Intuition

1

Analytical Thinking

Create exercises where students compare AI-generated and human-created responses.

2

AI Literacy

Ask: "How does the AI's reasoning differ from human intuition?" and "Where is the AI's logic strong, and where does it fall short?".



Developing Critical Thinking Rubrics

Depth of Analysis

Reward critical thinking over AI reliance. Did students go beyond surface-level AI responses?

Logical Coherence

Are students' arguments well-structured?

Independent Reasoning

Did students bring in external sources or perspectives?

Reflection

Did students critique AI's role in their work?